

KOMAX

Business Systems



www.komaxwv.com

March 31, 2025



The **BIG** Book Of Products & Services

Volume 27



Managed IT • Document Management • Managed Print • Leverage Microsoft Teams



500 D Street, South Charleston, WV • Toll Free: 888-483-7440 or Phone: (304) 744-7440 • Visit us at www.komaxwv.com

Copyright Komax Business Systems • All Rights Reserved • March 31, 2025

Contents

Our Awards

Konica Minolta Pro-Tech	1
ENX Magazine Elite Dealer	1
Best of Print & Digital	1

bizhub MFP

bizhub ONE i-Series	2
BLI - Buyers Lab Award	2
bizhub SECURE	3
bizhub SECURE Platinum	3
bizhub SECURE+LK-116 i-Option	3
Cloud-Shield Guard	3

Production Print

Accurio Digital Press	4
Optional Finishing	4
RIP Controllers	4
IQ-501 Intelligent Quality Optimizer	5
Automate Full Bleed Output	5
TU-510 In-Line Trimer	5

Wide Format Systems

Canon imagePROGRAPH TM Series	6
PosterArtist	7
WideTEK 36CL Scanner	7
KIP C700 Series	8
System K Software	8
MUTOH XperJet C641SR Pro	9
VertLith With VlexiDESIGNER Software	9

Desktop Scanners

KODAK alaris S2070 & i4250	10
Epson WorkForce ES-865 Color & DS-900WN	11
Epson EdgeLink	11

Mailing Systems

FP PostBase Vision	12
FP Parcel Folder Inserters	13

FORMAX Digital Print Finishing

Digital Print & Finishing	14
Inserters	14
Digital Printers & Addressers	15
Data Destruction & Shredders	15

Interactive Displays

ActivPanel 10	16
Promethean Chromebox	16
Classroom Configurations	16
Promethean ActivSuite	17
Promethean Accessories	17
Newline Q-PRO Series	18
Newline DV Series	19

Water Coolers

Water Logic Water Cooler i14 System	20
Water Logic Water Cooler WL50	21

EV Charging Systems

Convenient Locations	22
EV Charging Systems Family Solutions	23

Office Communications Systems

Unified Communications & Webex	24
Clerk Chat	24
Calling for Microsoft Teams	25
InterFAX-Secured Cloud Fax	26

Managed Print Services MPS

What is MPS?	27
--------------	----

Document Management

Content Central Document Management	28
PapaerCut MF Document Management	29

About Us

Our Team	30
History	30
Mission Statement	30



Our Awards



Pro-Tech

Service, Support and Satisfaction -- Second to none!

KOMAX Business Systems is the recipient of the prestigious Konica Minolta Pro-Tech Service Award. Our skilled technical specialists have demonstrated an exceptional commitment to customer support and training to make this happen.

Commitment

As your Konica Minolta Pro-Tech dealer, we are committed to your satisfaction - and Konica Minolta reflects this commitment through its support. Of all major manufacturers in our industry, Konica Minolta was the first to offer a program of this kind and continues its leadership role by setting the highest standards of performance, service and support. The nationwide network of Konica Minolta dealers offers a state-of-the-art product lineup that is unsurpassed.

Confidence

The Pro-Tech award gives every Konica Minolta customer a distinct advantage: the assurance of knowing that your Konica Minolta dealers have the skills, the training and the dedication to keep your equipment operating at the peak of productivity. If you're choosing a technology partner, that's an advantage worth considering.



Elite Dealer

KOMAX is the first and only West Virginia company to be awarded "Elite Dealer" status by Office Dealer Magazine. Office Dealer recognizes a few "Elite Dealers" based on exemplary sales and service performance, as well as their performance as corporate citizens in giving back to the community. We are proud to be considered the "best of the best in the office products reseller community".



Best in Print & Digital Award

Butler Street, an independent management consulting, training and research firm and the industry's leading provider of client loyalty and retention programs recognizes the award winners for Best in Print & Digital. Only those companies achieving a level of excellence in providing a frictionless customer experience are given this distinction.

Winning companies are selected based on their Net Promoter Score (NPS)- which has been widely regarded as the most accurate leading indicator of client loyalty and future revenue. KOMAX is proud to have received a NPS in the top 1% of dealers in the country.





The Bizhub One i-Series







bizhub ONE i-Series Video

bizhub C651i / C551i / C451i



The i-Series contains a robust engine, a quad-core CPU with 8 GB of memory and a 256 GB SSD, enabling fast, high-performance tasks.

-  Offers true cloud scan workflow automation with an intuitive interface
-  Standard dual scanning up to 280 opm
-  Mobile print support with access point capability
-  Maximum paper capacity of 6,650 sheets

Konica Minolta Wins Four Pick Awards and 2025 A3 Line of the Year Award from Keypoint Intelligence

"Our testing of Konica Minolta's latest A3 MFPs revealed exceptional and consistent performance across the lineup, whether it was the 30 ppm, 45 ppm, or 75 ppm, mono or color models,"



500 D Street, South Charleston, WV • Toll Free: 888-483-7440 or Phone: (304) 744-7440 • Visit us at www.komaxwv.com



Rethink security

In recent years, data breaches have become a serious issue for many businesses, with widespread media coverage of data theft and hacking causing damage to various companies' finances and reputations globally.



bizhub SECURE

- Protects the data in the memory of your i-Series device
- Protects from cyber attacks using data encryption
- Ensures files are stored only for usage, and are deleted in a timely manner if not used



bizhub SECURE Platinum

- Secures the network settings of your devices and guards against unauthorized access
- Allows you to disable unwanted and unnecessary protocols and ports
- Ensures the right certificates are in place for use
- Track what's happening on your MFP by enabling the right logs



bizhub SECURE + LK-116 i-Option

- Provides evidence of all activities and processed information, ensuring an audit trail suitable for security purposes
- Provides comprehensive protection for your bizhub device against the threat of viruses with our virus scanning solution supported by Bitdefender®
- Secures operations regardless of user and their location
- Notifies your IT admins if a virus is detected

Cloud Shield Guard

Shield Guard lets you easily monitor and manage the security of your entire bizhub fleet through the cloud. With a visual dashboard and customizable policies, your IT team can remotely oversee security settings, track status, and ensure protection across all devices.



AccurioPress



KONICA MINOLTA

AccurioPress C4070

Delivers high-speed printing at 70 pages per minute with two-sided prints up to 34" long. Advanced automation, real-time quality adjustments, and optional tools like the TU-510 Trimmer and IQ-501 Optimizer ensure professional finishing and maximum

Durable Performance

AccurioPress C4070

Up to 70 8.5"x11" color pages per minute

Up to 38 11"x17" color pages per minute

AccurioPress C4080

Up to 80 8.5"x11" color pages per minute

Up to 44 11"x17" color pages per minute

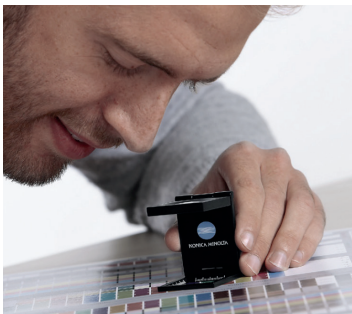


RETHINK VERSATILITY

Introducing the AccurioPress C4080 / C4070 – the incredibly versatile digital printer that connects you with success. With enhanced finishing, intelligent automation, flawless quality and advanced capabilities, simply build your perfect configuration from a huge range of innovative possibilities and say yes to more opportunities that will grow your business.

Optional Finishing

- 50-sheet booklet making with front trimming and optional creasing, slitting, and spine corner forming
- Perfect binding for books of up to 300 pages
- 100-sheet stapling with cutting mechanism
- Automated inline business card and postcard cutting
- Full bleed banners and posters
- Inline full-bleed trimming with options for creasing, perforation, business cards, and long sheets



Controllers

Konica Minolta Controller - IC-609

The Konica Minolta IC-609 print controller delivers high-quality 2,400 dpi printing at full speed, fast processing, and precise color accuracy.

Fieri Image Controller - IC-317

Boosts efficiency with advanced job management and workflow automation, reducing costs, errors, and turnaround times.



500 D Street, South Charleston, WV • Toll Free: 888-483-7440 or Phone: (304) 744-7440 • Visit us at www.komaxwv.com

AccurioPress

IQ-501 Intelligent Quality Optimizer TU-510 Inline Trimmer



IQ-501



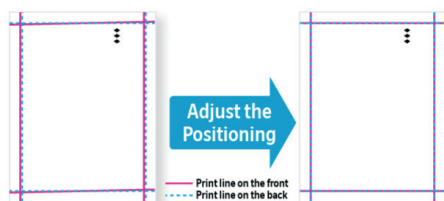
KONICA MINOLTA



IQ-501 Intelligent Quality Optimizer

Our IQ-501 Intelligent Quality Optimizer ensures perfect color consistency and precise alignment on every print. It automatically adjusts and monitors quality in real time, reducing waste and saving time. Available on our AccurioPress, it helps you achieve top-quality results with less effort.

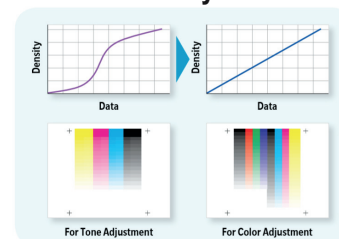
Front-To-Back Auto Registration



Density Balance Auto Adjustment



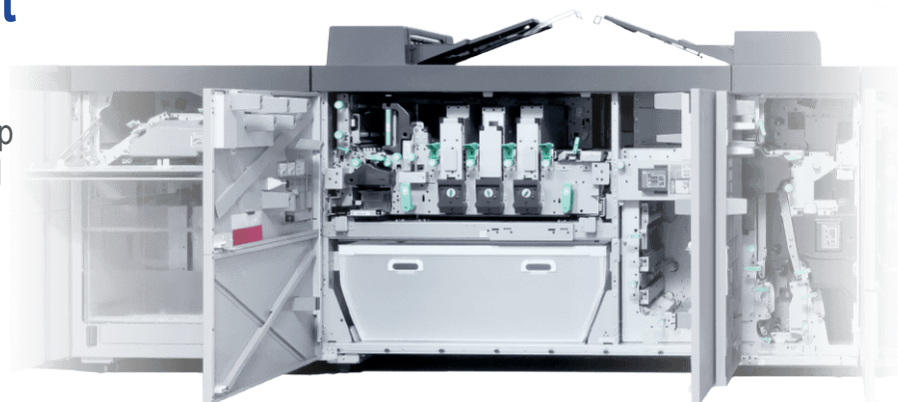
Color Density Control



Automate Full-Bleed Output

TU-510 Inline Trimmer

The TU-510 inline trimmer delivers ready-to-ship documents with precision cutting, creasing, and trimming—even for long sheets up to 51”.



It Delivers Full-Bleed Output

The TU-510 is a game-changer, cutting everything from business cards to extra-long sheets with precision. It delivers full-bleed output, supports creasing, and ensures perfect color and alignment with the IQ-501. Designed to save time and reduce manual labor, it's a smart way to expand your business.

KOMAX
Business Systems



KONICA MINOLTA AUTHORIZED
PRO-TECH
SERVICE CENTER
Since 2016



You Tube



KONICA MINOLTA
Authorized Dealer

500 D Street, South Charleston, WV • Toll Free: 888-483-7440 or Phone: (304) 744-7440 • Visit us at www.komaxwv.com

Copyright Komax Business Systems • All Rights Reserved • March 31, 2025



imagePROGRAF
TM Series



Wide Format Systems



imagePROGRAF TM-355 MFP Z36

Great for low-volume users in small spaces printing posters, CAD documents, signage.

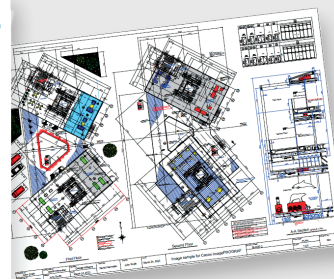
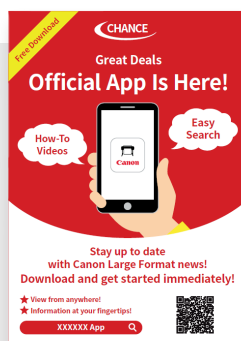
Vivid, Eye-Catching Prints,
with New Magenta Ink

Scan-to-Copy/File/Share
Solutions Available

Speeds up to 3.2 D/min

imagePROGRAF TM-355 MFP Z36

- 5-Color LUCIA TD Pigment Ink
- Print Speed of approximately 3.2 ppm
- EPEAT Gold Registered
- Color Calibration
- Fat-top body design with tilt touchscreen
- Automatic Paper Detection (Type/Length/Width)



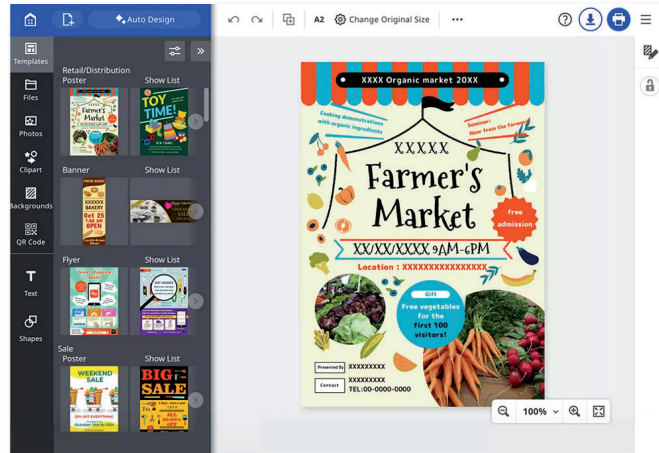
500 D Street, South Charleston, WV • Toll Free: 888-483-7440 or Phone: (304) 744-7440 • Visit us at www.komaxwv.com



Canon's Poster Creation Software
MAKING POSTERS EASY FOR EVERYONE



PosterArtist



Intuitive Interface

Easy to use for all skill levels.

Unleash Your Creativity

Make it yours by importing your own files such as JPEG, PNG and PDF for complete customization.

Choose Your Creative Path

You have the option of starting a blank canvas to create your ideas or choose from a variety of pre-designed posters segmented into various themes, such as food and beverage, retail, sale and many more.

Gold and Silver Textures

Add in the gold and silver texture look to graphics, backgrounds and text creating enhanced output

Royalty Free Stock Images

Select from a wide variety of images from photo service providers with millions of photos to choose from.

Wide Format Scanners

Digitize documents up to 48 inches wide quietly and at astonishingly fast speeds.



These scanners can be used in such markets as universities, libraries, mapping services, GIS,copy services, reprographics, A/E/C CAD, and archiving photographs.

Image Access WideTEK 36CL Scanner

- Face-up scanning with modification features
- Scans up to 36-inch widths
- 1200 x 1200 dpi scanner resolution
- No additional PC required
- Optional Add-On: 22 inch HD touchscreen with adjustable arm or 22 inch TD touchscreen with bridge



500 D Street, South Charleston, WV • Toll Free: 888-483-7440 or Phone: (304) 744-7440 • Visit us at www.komaxwv.com

Copyright Komax Business Systems • All Rights Reserved • March 31, 2025



700 C SERIES

the Power of Versatility



Wide Format Systems



SYSTEM
SOFTWARE K



Up to 15.6"
Touchscreen

Intuitive Feature
Selection

Access Job History
for Easy Reprint of Jobs

Real-time Image Preview with
Area of Interest Image Editing

Pictorial Feature &
Operator Guide

Auto De-skew for
Copy & Scan

KIP Smart Link QR Code Access
Operator Guides for Smart Phone



When choosing a new print system

It's not just one component that makes a great print system, it's a combination of features and benefits that create a dependable print system.



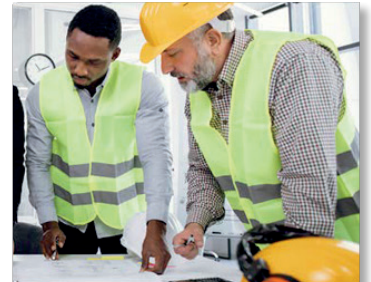
BENEFITS OF VERSATILITY

- Three Models:
Low, Mid & High Volume
- Three Production Speeds
 - Twelve Product Configurations
 - Best in Class Technology



PRINT | COPY | SCAN

- NEW 15.6" smart touchscreen
- True Touch Productivity
- True smart tablet function that is easy for new or experienced users



SYSTEM K SOFTWARE

Industry Leading Software
Smart Printing, Data Protection,
System Wide Reporting



PRINT



COPY



SCAN

True Smart Tablet Productivity

The NEW 15.6" KIP touchscreen has true smart tablet easy function and offers unmatched productivity with intuitive features to brilliantly automate Print, Copy, and Scan workflow.

Contact Control

Precision Imaging: KIP 700 C Series systems utilize Contact Control Technology (CCT), the ultimate wide format imaging solution. The ability to control the placement of the toner particles through direct contact at every stage of image development ensures the highest level of accuracy and precision quality in the production of every color or b&w image.



KOMAX
Business Systems



KONICA MINOLTA AUTHORIZED
PRO-TECH
SERVICE CENTER
Since 2016



YouTube

KONICA MINOLTA
Authorized Dealer

500 D Street, South Charleston, WV • Toll Free: 888-483-7440 or Phone: (304) 744-7440 • Visit us at www.komaxwv.com

MUTOH

XpertJet C641SR Pro

M S 31
Eco-Solvent
Inks
CMYK



24" ECO-SOLVENT PRINTER/CUTTER COMBO

The ALL NEW MUTOH XpertJet C641SR Pro 24" Eco-Solvent Desktop Printer/Cutter Combo is perfect for a wide range of applications such as stickers, t-shirt transfers, vehicle decals, posters, banners and more. Print and cut a 24-inch roll of media while operating at speeds up to twice as fast as its closest competitors.

XPJ-C641SR Pro Printer/Cutter combo

- MUTOH AccuFine printhead, providing outstanding speed and unrivaled quality even at lower resolutions.
- Dropmaster2 and FeedMaster automatic alignment systems for achieving high caliber, repeatable prints.
- i-screen Intelligent Interweave technology to prevent banding while printing.
- MediaTracker, barcode printing and scanning to track remaining media.
- 24-inch roll capacity for enhanced production output.
- Built-in contour and perforated through-cut capability with speeds up to 150mm/s.
- Optional stand and take-up unit for higher production needs.



STICKERS



APPAREL



DECALS



POSTERS

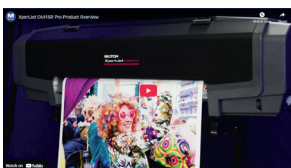
Drop Master Technology

Intelligent Interweave



VerteLith with FlexiDESIGNER software enhances the XPJ-C641SR Pro:

- Seamless setup of print & cut environments, with a continuous cut feature for true one-step job submission.
- Easily design cut lines using FlexiDESIGNER and send jobs directly to VerteLith.
- Soft Proof the printed image colors on screen before submitting to print.



MUTOH Video

POWERED BY



VerteLith +



Flexi



MUTOH

KOMAX
Business Systems



KONICA MINOLTA AUTHORIZED
PRO-TECH
SERVICE CENTER
Since 2016



You Tube

KONICA MINOLTA
Authorized Dealer

500 D Street, South Charleston, WV • Toll Free: 888-483-7440 or Phone: (304) 744-7440 • Visit us at www.komaxwv.com

Copyright Komax Business Systems • All Rights Reserved • March 31, 2025



Desktop Scanners



Kodak S2060w/S2080w Scanners

**Fast. Accurate.
Connected.**

Connected sheet-fed document scanners that never compromise on image quality or performance.

S2070 Scanner



See Video

- Built-in Active Feeding System (AFS)
- Embedded image processing
- Dual Light Illumination (DLI)
- 70ppm | 80 Sheet ADF
- Fast and powerful



High Speed

Your busy mailroom, production scanning department or service bureau needs the most productive, accurate, and reliable information capture on the market.

i4250 Scanner

- 130ppm | 500 Sheet ADF
- Intelligent and compact scanning
- Advanced multi-feed sensors
- Metal detection included
- Digital & physical Imprinting options

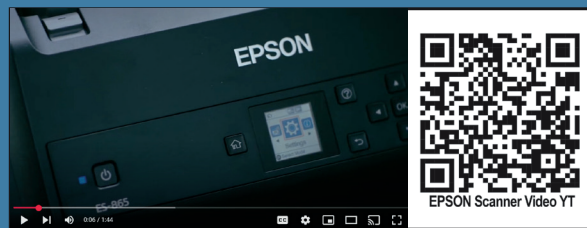


WorkForce ES-865 Color Duplex Document Scanner



Product Highlights

- Scans up to 65 ppm/130 ipm¹; 2-sided, single-pass
- Scan, review and save with ScanSmart Software
- Optional Accounting Edition for receipt scanning
- Seamless integration — TWAIN driver included
- PC and Mac compatible



Interface Directly with Your Document Management Software

"Epson EdgeLink scanners easily work with third-party document management software, letting you scan directly using their 4.3" color touchscreen—no PC needed."



DS-900WN

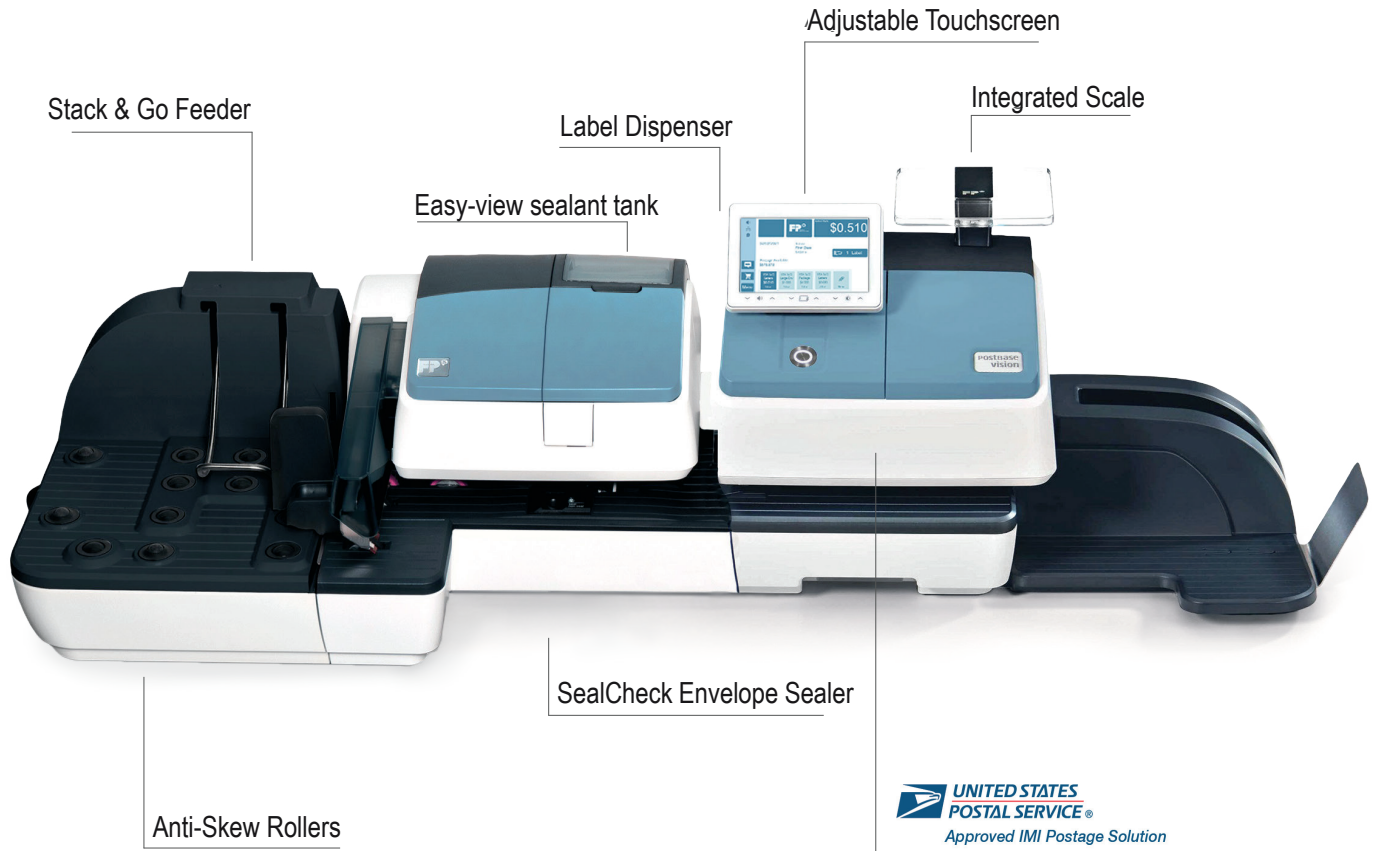
- 70 ppm / 140 ipm⁴
- 100-Sheet ADF
- 11,000-Sheet Peak Daily Duty Cycle⁵
- Paper Alignment Plate
- EdgeLink Capable
- Optional Fleet Management Software





PostBase® vision Advanced

The PostBase® Vision Advanced combines award-winning design with user-friendly technology, making mail processing effortless. Its large touchscreen, Stack & Go feeder, and anti-skew rollers ensure smooth, reliable performance. With cloud-based analytics and advanced digital features, it's both stylish and highly functional—available in five designer colors to fit any office.



MyFP Customer Portal



USPS® IMI Approved



SealCheck Sensor





Mailing Solutions USA

Folder Inserters



www.komaxwv.com/fp-mailing

What is a Folder Inserter?

A folder inserter is a fast and reliable method of folding and inserting paper and documents into an envelope for mailing. Our folder inserters process your mail ten times faster than by hand, increasing productivity and making mail prep a breeze.

FPI 700

3 Feed Stations
Folds up to 5 sheets together



The FPI 700 feeds, folds, inserts, and seals up to 1,350 letters per hour, making the FPI 700 folder inserter 10 times faster than by hand.

FPI 2700

1-3 Feed Stations
Folds up to 8 sheets together



The FPI 2700 automates your mailings with smart technology and easy operation, ensuring secure and efficient processing.

FPI 5700

2-6 Feed Stations
Folds up to 10 sheets together



The FPI 5700 transforms your mail center into a powerful, automated solution. Its intuitive touchscreen makes operation simple and efficient.

FPI 5130

4-5 Feed Stations
Up to 4,300 envelopes per hour



The FPI 5130 securely automates your mailings with customizable options, including a four-feeder tower for envelopes, sheets, or inserts.

FPI 7140

4-8 Feed Stations
5,400 envelopes per hour



The FPI 6130 securely automates and customizes your mailings with reliable technology and a streamlined design for maximum efficiency.

File Based Processing



A secure, reliable solution that ensures accurate mail processing with proof of completion and privacy protection.

KOMAX
Business Systems



KONICA MINOLTA AUTHORIZED
PRO-TECH
SERVICE CENTER
Since 2016



You Tube

KONICA MINOLTA
Authorized Dealer

500 D Street, South Charleston, WV • Toll Free: 888-483-7440 or Phone: (304) 744-7440 • Visit us at www.komaxwv.com

Copyright Komax Business Systems • All Rights Reserved • March 31, 2025



Digital Print & Finishing



- High-speed CMYK printing on a variety of media
- Stationary print head with 70,400 inkjet nozzles
- Speeds of up to 7,500 envelopes/hour
- Full-bleed printing up to 1600 x 1600 dpi
- High-capacity ink tanks



- Compact, on-demand label printer
- Continuous roll-to-roll or print-and-cut operation
- Memjet print head features 70,400 inkjet nozzles
- Intuitive 7" color touchscreen Local Dealer:
- Full-bleed CMYK printing up to 1600 x 1600 dpi



Inserters

6308 Series



- Four configurations available
- High-capacity vertical output stacker
- 7" color touchscreen control panel
- Up to 50 programmable jobs Local Dealer:
- Top-loading envelope hopper

7104 Series



- Modular design
- Up to 8 modules with up to 17 feeders
- 22" color touchscreen
- Processes up to 4,500 envelopes/hour
- Unlimited programmable jobs



Digital Printers & Addressing

ColorMax7 Digital



- High-speed inkjet printer
- Full CMYK color
- Full bleed 8.5" x 17"
- High-capacity ink tanks

ColorMax8 Digital



- Intuitive 7" color touchscreen
- Full CMYK color
- Full bleed up to 8.5" wide
- Prints on a wide range of media
- High-capacity ink tanks



Data Destruction

FD 8206CC Deskside Shredder



- AutoStart/AutoStop
- Up to 17 sheets at once
- CDs, credit cards, staples
- Two dedicated infeeds
- Casters for portability

FD 8300HS High Security



- NSA Level 6 High Security
- AutoStart/Stop/Reverse
- LED Control Panel
- Shred size: 1/32" x 3/16"
- All-metal cabinet



Promethean ActivPanel 10



Interactive Displays

Goodbye, cookie-cutter tech. Hello, custom fit.

ActivPanel 10 is all about intelligent options. Choose your ideal panel configuration—model, size, operating system, and accessories—with no compromises.

User-friendly, made friendlier

The ActivPanel 10 experience supports the most creative, productive you.

Simplify tasks and focus on teaching with the ActivPen® 2 and All-in-One Remote. Move freely, control content, and access key resources from anywhere in the room—no hassle, no distractions.



A completely integrated experience

When you pair Promethean Chromebox with your ActivPanel, you gain added computing power, expanded storage, and super-fast Wi-Fi®.

Instantly access your favorite Google apps.

Promethean Chromebox connects your ActivPanel directly to the Google Play Store, putting thousands of apps for creating more dynamic lessons at your fingertips.

Flexible Configurations for the Classroom



The Android Module is a recommended purchase for a tablet-like experience, with access to the Internet, whiteboard, mirroring, and more. A Windows Module is available for an all-in-one, large-format Windows experience.



Select from versatile mounting*, including a fixed wall mount, height-adjustable wall mount, height-adjustable mobile stand, and fixed-height mobile stand.



Enhance your classroom audio with the ActivSoundBar, providing deep bass and room-filling sound.





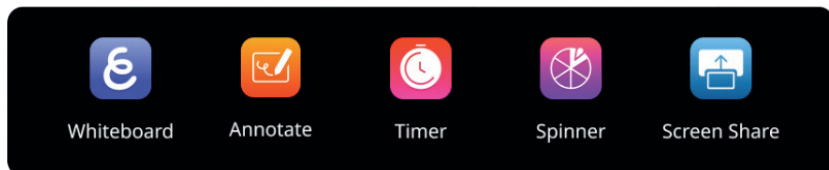
Promethean Software & Accessories



Interactive Displays

Promethean ActivSuite

With our new software, your favorite ActivPanel engagement apps are accessible on your device to use at and away from the panel. Hello, enhanced freedom and flexibility!



You're in control

The ActivPanel 10 with Promethean ActivSuite software offers a simple, plug-and-play experience—no hassle, no stress, no complicated setup. Easily connect your devices for a smooth, familiar teaching and learning experience.

Explain Everything Advanced

Tired of juggling multiple browser windows, apps, and logins? Explain Everything Advanced puts it all in one convenient place so you can quickly and easily find the resources you need.



Activpanel Stands & Mounts

Configure your space exactly how you want it with mobile, fixed, and adjustable stands and mounts.



Distance Learning Bundle

Engage remote learners by giving them a clear view of their teacher and the ActivPanel.



ActivSoundbar

Bring crystal-clear, immersive audio to any lesson or presentation.



KONICA MINOLTA
Authorized Dealer

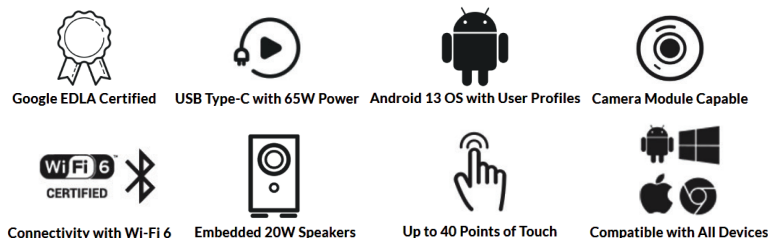
500 D Street, South Charleston, WV • Toll Free: 888-483-7440 or Phone: (304) 744-7440 • Visit us at www.komaxwv.com

Copyright Komax Business Systems • All Rights Reserved • March 31, 2025



The Ultimate Interactive Display

Inspire students to actively engage in learning with the Newline Q Pro Series, a high-performance interactive display solution with native Google EDLA Certification.

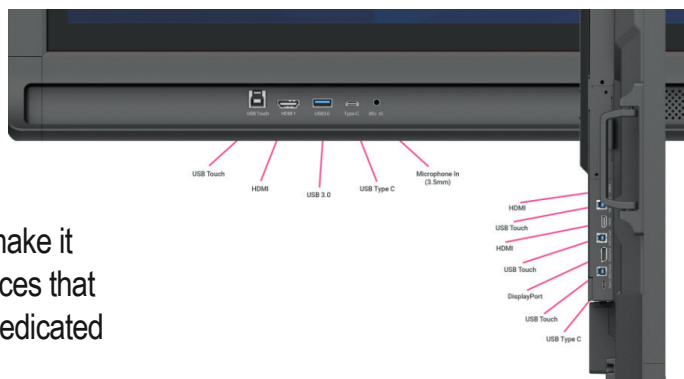


Seamless Integration

Integration with Google Apps enhances instruction by providing easy access to Google Classroom, Google Drive, and other Google applications.

Superior Connection

Newline's Q Series brings to you smart connectivity through diverse ports and wireless compatibility. The diversity in connection ports provide great options for all types of devices, making the interactive display more accessible to all users. Ports located on the front and the back of the panel make it easy to use the panel in any mounting situation. For those devices that need wireless connection, a reliable Wi-Fi 6 module provides dedicated wireless connectivity.



newline

CONNECT. CREATE. COLLABORATE



Interactive Displays



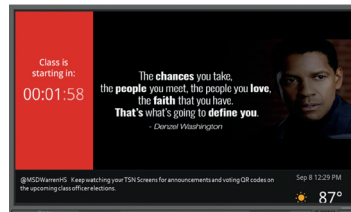
newline **DV** SERIES

All-in-One Direct View LED Display



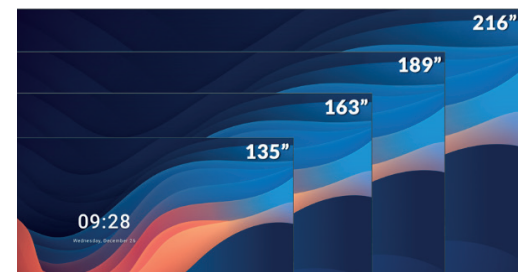
Intelligent All-In-One Display

An exceptional All-in-One Direct View LED display. Used for advertising, presentations, or entertainment purposes, provides an immersive viewing experience that leaves a lasting impression.



Sleek Design with Ultra-Thin Bezel

The DV One+ is available in four sizes—135", 163", 189", and 216"—offering flexibility to suit a variety of spaces and needs.



Seamless Integration



135"-216" HD Resolution Display



Sleek Design with Ultra-Thin Bezel



NDM+ Remote Management Support



Easy Access to Maintenance Components



RS-232, IP Control, Wake-on-LAN & Wake-on-Wi-Fi



Hidden Port Locations



Enhanced Performance with Android 13



Calibration App for Easy Adjustments

KOMAX
Business Systems



KONICA MINOLTA AUTHORIZED
PRO-TECH
SERVICE CENTER
Since 2016



You Tube

KONICA MINOLTA
Authorized Dealer

500 D Street, South Charleston, WV • Toll Free: 888-483-7440 or Phone: (304) 744-7440 • Visit us at www.komaxwv.com

Copyright Komax Business Systems • All Rights Reserved • March 31, 2025



i14

One Convenient System For Ice And Water Dispensing

The i14 features a large capacity ice bin that holds 13.2 lbs and produces 44 lbs of popular tulip-style ice per day. It offers hot, cold, and ambient water options, combined with advanced hygiene features like hands-free sensor technology for touchless dispensing and certified reverse osmosis filtration. This unit also offers in-tank and in-storage bin LED UV to maintain clean water and ice. Built with reliable and dependable components, this solution includes a durable stainless steel cold tank, an advanced leak prevention system, and an eco-friendly energy-saving mode.



Integrated Ice & Water Solution

- Large capacity ice bin holds 13.2 lbs
- Available with hot, cold, and ambient water
- Produces 44 lbs of popular tulip-style ice



Advanced Hygiene Features

- Hands-free sensor technology for touchless dispensing
- Trusted and certified reverse osmosis filtration
- Offers both in-tank and in-storage UV sanitation



Reliable & Dependable Components

- Durable stainless steel cold tank
- Advanced leak prevention system
- Eco-friendly energy saving mode

Cold

Ambient

Hot

Ice



Scan to play on YouTube



Scan to play on YouTube





WL50

High-performance water dispenser

The WL50 is equipped with premium filtration and an integrated in-tank LED UV making it ideal for high-traffic environments.

Advanced technology:



High performance filtration Configured with 5-stage reverse osmosis filtration or 4-stage carbon filtration.



In-tank LED UV In-tank LED UV technology helps maintain system cleanliness.



Surface protection technology*Key surfaces are infused with surface protection technology, inhibiting the growth of odor and stain-causing microbes.



Large capacity hot tank Equipped with 1.1 gallon stainless steel hot tank.

Number of users: 50+

Surface protection technology protects surfaces from odor and stain-causing microbes. It does not protect users against bacteria, viruses, germs or other disease causing organisms. This technology is not a substitute for good cleaning practices.



Scan to play on YouTube



Scan to play on YouTube



Sediment Filter

Reduces particles such as dirt, silt, rust, and pipe residue.



Pre-Carbon Filter

Reduces chlorine and chemicals.



Reverse Osmosis

Membrane Reduces dissolved solids, pharmaceuticals



Mineral Add-Back Filter

Adds minerals, electrolytes, and enhances alkalinity.



Post-carbon Filter

Final polishing filter ensures great taste.



New Product Alert

EV Charging Station Systems Now Available From KOMAX



Charging Stations For Home, Work Fleets & Commercial Point of Sale

Conveniently Charge At Home

Charge your electric vehicle safely and in the privacy of your home. With innovative features, maximum power delivery, greater convenience, and the advanced technology ensures your vehicle is ready to go!

Road tripping

Make your business or property a popular stop along highway and interstate routes, a Direct-Current Fast Charger (DCFC) station provides a valuable resource while also encouraging these long-distance drivers to visit you as opposed to other stops.

Fleets

If you own a fleet of electric vehicles that are used throughout the day for business purposes, having a fast-charge option may be effective in keeping your fleet fully charged.

Car sharing

Short-term (often hourly) car rentals represent a growing business model in metro areas throughout the U.S. Direct-Current Fast Charger (DCFC) stations can quickly charge these vehicles between rental sessions.

Ultimately

EV charging is really about meeting the range needs of EV drivers in a way that aligns with their habits while remaining cost-effective for the property.





Multifamily EV Charging Solutions

Widespread EV adoption may still be in its infancy, but drivers who have already made the transition will seek quality and reliable charging stations as a key amenity before deciding where to live. Even those with less interest in electric vehicles or still pondering the switch will recognize the commitment to tenants that EV charging stations represent, similar to multifamily properties that offer washers and dryers, pools, or gym equipment.

We want to help you provide a simple, turnkey solution that drives differentiation and revenue for partners that want to be involved in the EV revolution.

- Offer a premium amenity to residents and their visitors
- Attract the EV driver demographic
- Create an additional revenue stream through charging revenue or offer to residents complimentary
- Add an eco-friendly component to the overall perception of your building
- Offering charging stations shows that your properties are on the leading edge of tech
- Help improve the air quality and reduce CO2 emissions in your neighborhood
- Utilize unique marketing opportunities with on-screen ads and pedestal wraps
- Stand apart from competing properties in your community

80%
OF EV
CHARGING
HAPPENS AT
HOME

25%
OF VEHICLES
WILL BE
ELECTRIC BY
2025

58%
OF RENTERS WILL
PAY MORE TO LIVE
IN A COMMUNITY
OFFERING EV
CHARGING

KOMAX
Business Systems   

KONICA MINOLTA AUTHORIZED
PRO-TECH
SERVICE CENTER
Since 2016



You Tube 


KONICA MINOLTA
Authorized Dealer

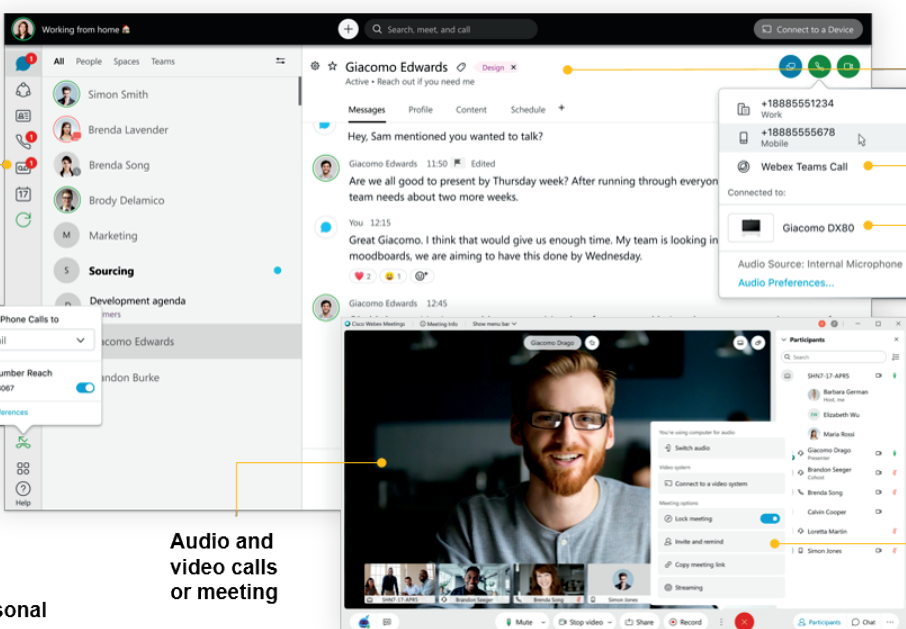
500 D Street, South Charleston, WV • Toll Free: 888-483-7440 or Phone: (304) 744-7440 • Visit us at www.komaxwv.com

Copyright Komax Business Systems • All Rights Reserved • March 31, 2025

Cloud PBX With Webex

One Secure Place to Call, Meet, and Message

Cloud PBX with Webex is a complete collaboration solution with flexible plans, from basic softphone to premium meetings for up to 1,000 participants. Plus, we handle management and support, so you can focus on what matters.



Visual voicemail

Forward Phone Calls to Voicemail

Call-forwarding, single number reach, DND

Personal preference Management

Audio and video calls or meeting

Messaging, Integrations & Team Tools

Calling options

Desk-phone & room device pairing and control

Hold / resume, transfer, merge / conference

- Call recording with AI
- SMS integration with
- Cloud fax & traditional fax solutions
- 24/7 US - Based Support Desk
- Entire collaboration experience is managed and supported
- Flexible packages from basic phones to premium meetings

Clerk Chat

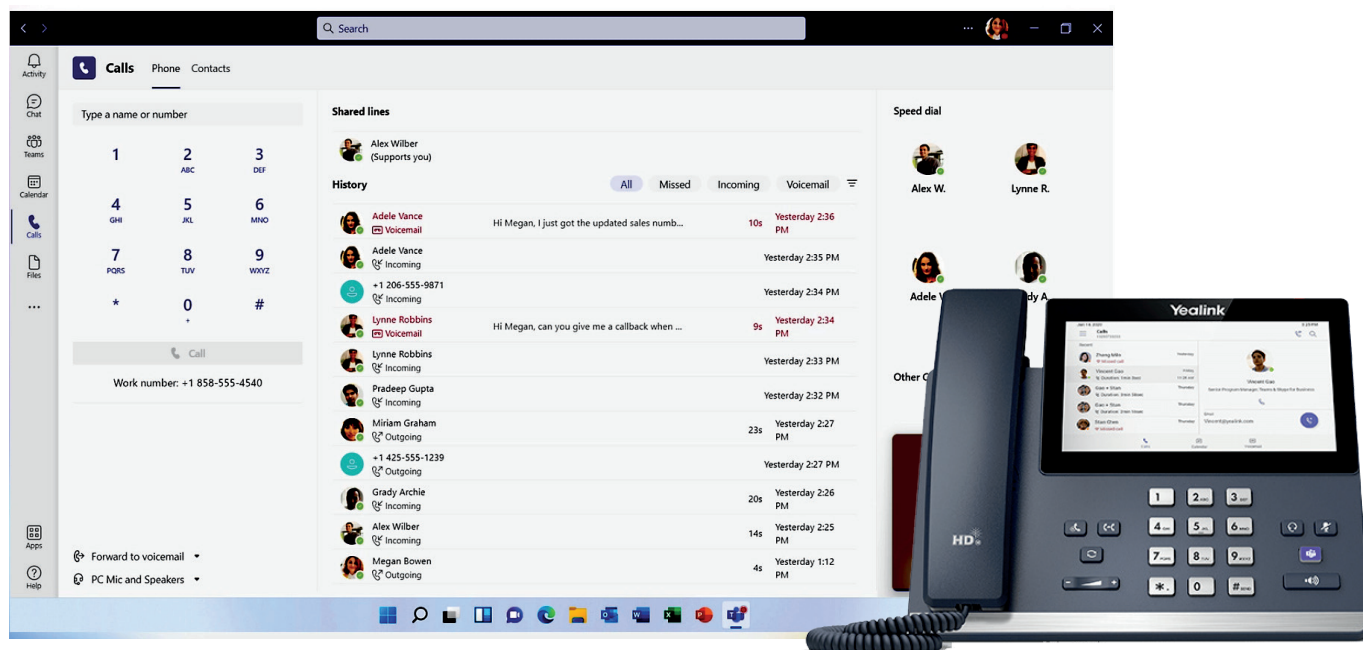
- **Group Messaging:** Reach multiple customers instantly, perfect for small business campaigns
- **Automated Marketing:** Streamline text message marketing with automation, saving time and enhancing efficiency
- **AI SMS Assistant:** Boost efficiency with our AI-powered SMS Assistant, handling customer inquiries swiftly and accurately



Calling for Microsoft Teams

Unlock capabilities with M365 and Microsoft Teams for a unified communications solution.

Make and receive business calls anywhere with Microsoft Teams Calling. Use your computer, mobile device, or desk phone for clear audio, smart call routing, voicemail, and seamless Microsoft 365 integration—all in one place.



- Native Teams call routing
- Teams voice administration
- Call recording with AI
- Cloud fax & traditional fax solutions
- SMS integration
- 24/7 US - Based Support Desk

Why Switch to a KOMAX VoIP Phone Solution?

- Cost Savings - Likely to reduce monthly phone bill
- Flexibility - Make and receive calls from anywhere with an internet connection
- Advanced Features - Enjoy voicemail-to-email, call forwarding, auto-attendants, and more
- Scalability - Easily add users as your business grows



In this video, we explain what Unified Communications are, and how they form a more efficient and affordable flow of communications between agents and consumers.

Let us see if we can save you money...It's absolutely FREE!

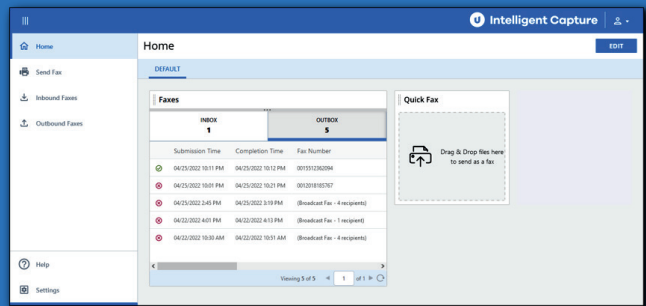


InterFAX

CloudFax



Ready? Set? Get cloud fax, right now.



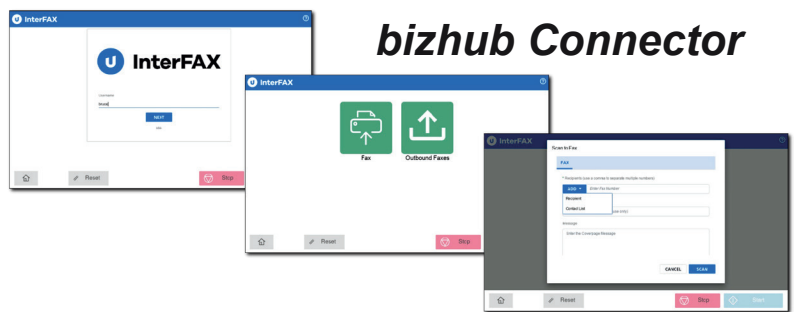
InterFAX – Secure Cloud Faxing for Businesses

Seamless Cloud Faxing Anytime, Anywhere

Email, web interface, and mobile devices

Easily send secure cloud-based faxes with bizhub One i-Series and Konica Minolta MFPs—perfect for businesses of all sizes.

- Secure cloud-based faxing with enterprise-grade protection.
- Enterprise-grade security & compliance with TLS encryption for incoming and outgoing faxes.
- Secure access through private and public key signatures. Added privacy with the “Delete Fax After Completion” feature.
- Seamless IT integration with a flexible API that connects to Microsoft Outlook, Salesforce, and SAP R/3.
- Developer support for REST, SOAP, and PHP compatibility. Custom controls for user credentials, permissions, and delivery confirmations.
- Konica Minolta bizhub integration enables Scan-to-Fax with the InterFAX Marketplace App and the ability to print incoming faxes with or without authentication.



bizhub Connector



KOMAX
Business Systems



KONICA MINOLTA AUTHORIZED
PRO-TECH
SERVICE CENTER
Since 2016



You Tube

KONICA MINOLTA
Authorized Dealer

500 D Street, South Charleston, WV • Toll Free: 888-483-7440 or Phone: (304) 744-7440 • Visit us at www.komaxwv.com

MPS-Managed Print Services



What are Managed Print Services (MPS)?

Konica Minolta's Managed Print Service (MPS) simplifies printer and scanner management. Enjoy hassle-free maintenance, supply management, and device optimization—whether using your current equipment or upgrading to new devices.



Reduced Costs

Reduce costs by identifying your total cost of ownership



Optimized Efficiency

Realize the benefits of automated processes.



Increased Security

Security solutions safeguard the privacy and confidentiality.



Improve Sustainability

See your true environmental impact of your business.

Managed Print Services Benefits

- FREE Installation and 30 day monitoring
- Automatic toner fulfillment
- We deliver all of your consumable needs
- No need to order supplies or store inventory
- Eliminates ordering errors
- Reduces your administrative expenses
- Saves you personnel time
- Simple invoicing
- Set auto service alerts
- Eliminates burden of technical services issues
- ProTech* certified technicians support
- We monitor and assess your printer fleet 24/7
- Service call cost included
- Proactive maintenance

Printer Fleet Monitoring Includes

- Assessing your devices and their performance
- Tracking print volume by device, department, and user
- Analyzing costs per device and per print
- Monitoring print jobs to improve efficiency and automate workflows
- Automatic toner delivery
- Proactive account management
- Regular reviews to enhance workflow and cut costs

Ask for a *FREE* 30 day assessment & proposal!



*The Pro-Tech Service Award recognizes those Konica Minolta dealers who have demonstrated an exceptional commitment to customer support and satisfaction.



500 D Street, South Charleston, WV • Toll Free: 888-483-7440 or Phone: (304) 744-7440 • Visit us at www.komaxwv.com

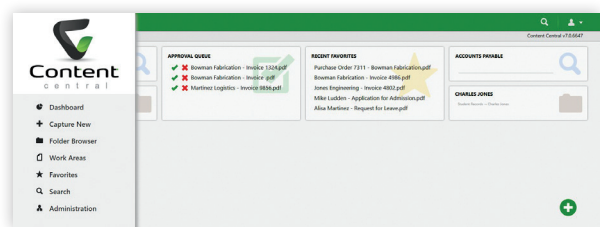
Copyright Komax Business Systems • All Rights Reserved • March 31, 2025



Simplify Your Document Management with Content Central

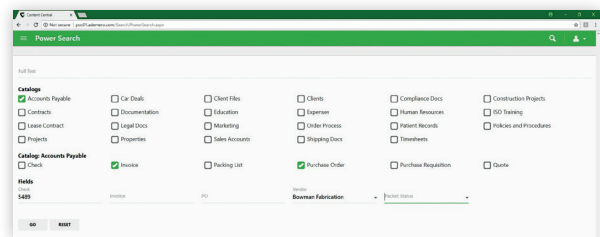
Content Central helps businesses organize, store, and access documents easily. With automated workflows, secure storage, and quick search tools, your team can find what they need—fast.

- Stay Organized – Keep all your documents in one secure place.
- Save Time – Automate approvals and document routing.
- Find Files Fast – Search by keywords or text to locate documents instantly.
- Stay Secure – Control access and stay compliant with regulations.



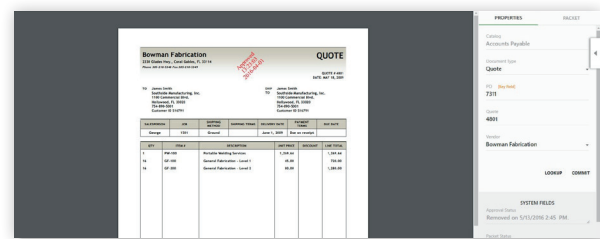
Welcome to the Dashboard

Log into Content Central and instantly access your most important documents and work areas. Quickly reach vendor folders, run saved searches, or access favorite documents by adding them to your Dashboard!



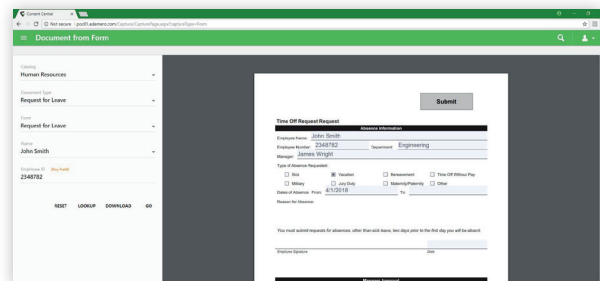
The All-New 'Power Search'

Find documents faster with Content Central's new 'Power Search'! Using advanced OCR technology, it makes scanned and uploaded files fully searchable by text or specific criteria.



Create Documents with Capture Forms

Upload documents to Content Central easily with drag-and-drop, web services, monitored folders, or DirectScan. Create documents with fillable forms, share them via link, and automate workflows with instant approvals and notifications upon submission.



Viewing Documents

Content Central maximizes viewing space, letting you preview documents alongside important metadata—no need to compromise on size or details.

Make document management easy and efficient with Content Central!



See Video



500 D Street, South Charleston, WV • Toll Free: 888-483-7440 or Phone: (304) 744-7440 • Visit us at www.komaxwv.com



PaperCut MF makes printing simple, secure, and cost-effective for businesses and schools

Print management that just works

It helps to:

- Control printing costs
- Reduce waste
- Improve security

With features like:

- Secure print release
- Easy mobile printing

Automated print management Whether you need to track usage, set print rules, or integrate with your existing systems, PaperCut ensures printing “just works.”



Easily print from any device, anytime

Printing should be simple—and with PaperCut, it is. We make printing effortless for your users, whether they’re on BYOD or mobile, and take the hassle out of driver deployment. Plus, enjoy features like easy tap-and-release printing and powerful third-party integrations.

Secure all documents before, during, and after printing

Protect your documents just like your digital data. With secure print release, access control, and digital signatures or watermarks, PaperCut keeps your prints safe from leaks



Protect data before, during, and after printing

PaperCut MF’s security puts peace of mind center stage. Physical measures protect documents throughout their entire lifecycle – and end-to-end encryption keeps data as breach-proof as possible.



Before: Access control



During: Secure release



After: Watermarking



About Us



Our Team

KOMAX Business Systems offers one of the most experienced and successful office equipment teams in the industry. Perhaps it is because we approach our mission as a consultative practice rather than to merely sell office equipment. We understand that the proper office equipment is vital to your business and we are committed to providing total solutions.

History

KOMAX Business Systems is a West Virginia owned and operated LLC founded in 1999. We service Southern West Virginia, Eastern Kentucky, Southern Ohio and Western Virginia.

- **Locally owned and operated.** That means you talk to local people every time you call and get an immediate response without going through automated phone lines and “passing the buck”.
- **Get local, fast service from highly trained technicians.**
- **Our full time Konica Minolta Bizhub trainer, Patti, can answer your questions about how to operate the machine.**
- **Any of our over 40 employees are here to help you!**

Products

KOMAX partners with only reputable, top of the line manufacturers for all products/services. This includes, but is not limited to, Konica Minolta, KIP, Canon, Mutoh, FP Postage, Destroy-It, Formax, Kodak Alaris, Epson, Promethean, NewLine, ACDI and many more. We can provide the ideal combination of office equipment, solutions software and IT services to make your business more productive.

Mission Statement

KOMAX Business Systems is dedicated to always exceeding the expectations of our customers. We will always be reliable, flexible, and solution-oriented in addressing the needs of our customers. Respect and professionalism will always be paramount in relations with our customers, employees, vendors, and our business partners.

